

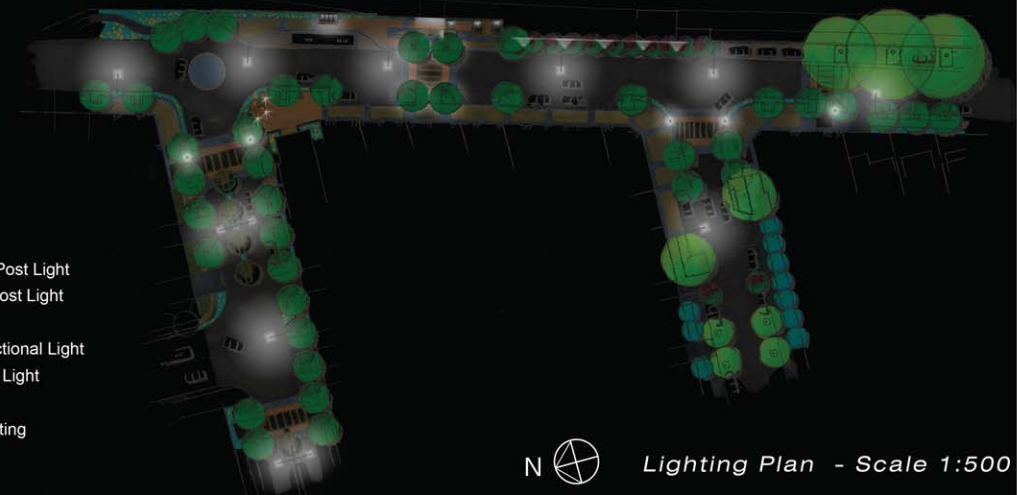
Section A-A through Railway Street - Entrance to Station



A - Photo Montage - Southeast view from Railway Street toward Station entrance

LIGHTING LEGEND

- Double Arm Single Post Light
- Single Arm Single Post Light
- 4m Post Top Light
- Above Ground Directional Light
- Flush Wall Mounted Light
- In Ground Up Light
- In Ground Tree Lighting

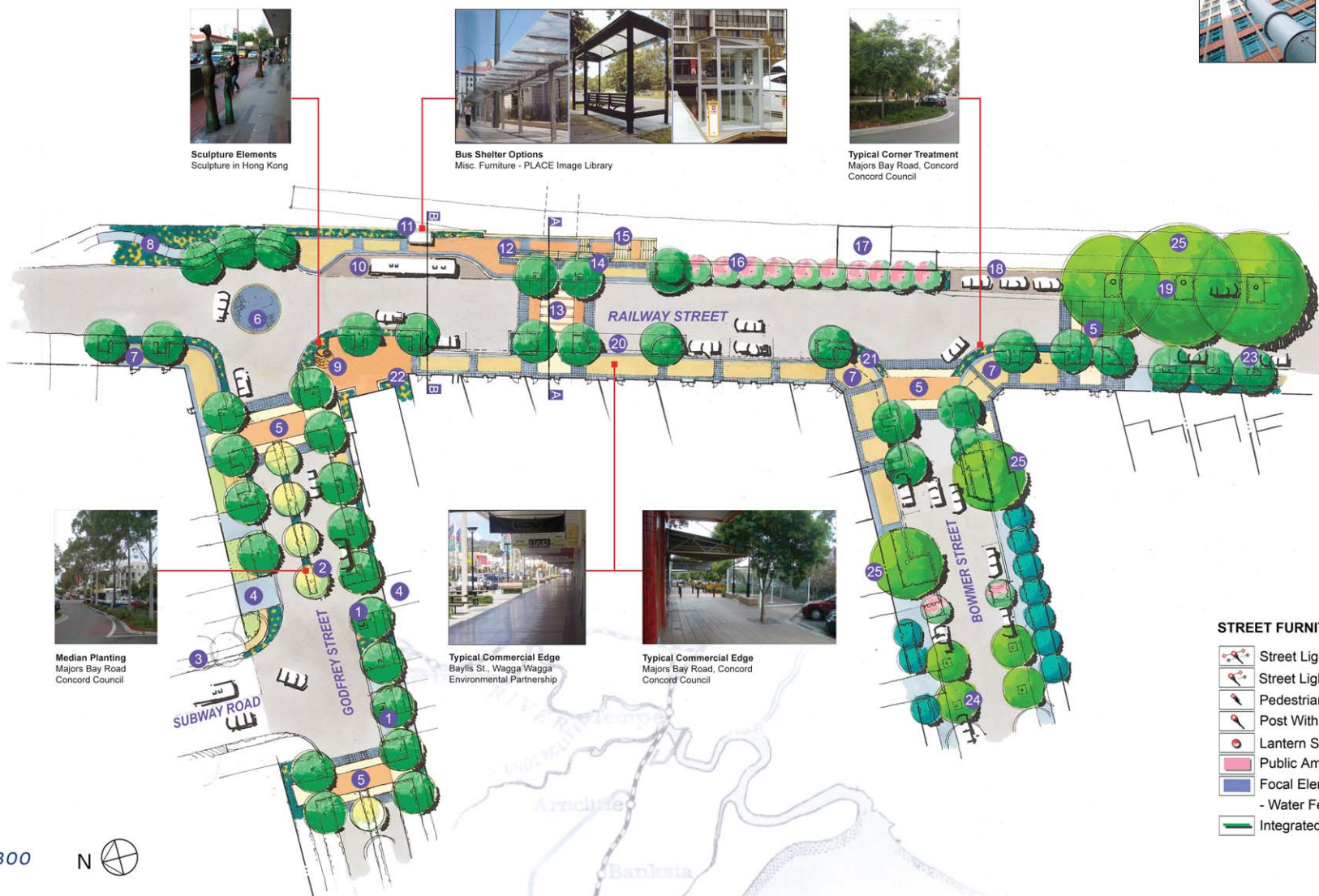


Lighting Plan - Scale 1:500

MASTERPLAN LEGEND

- 1 Steel Sculpture on Rock Base Inspired By Local Flora & Fauna
- 2 Street Trees in Planted Median
- 3 Existing Footpath along Subway Road
- 4 Existing Driveways
- 5 Pedestrian Crossing-Flush
- 6 Existing Mountable Round-a-bout
- 7 Contained Outdoor Spaces with Seating
- 8 Concrete Path Connecting to Subway Road Overpass
- 9 Public Sculpture / Water Element
- 10 Public Bus Lane
- 11 Public Bus Shelter
- 12 Reconfigured Wall Allowing Open and Safe Stair Access to Platform and Underpass
- 13 Pedestrian Crossing Raised / Traffic Calming Device
- 14 Sculpture / Water Element
- 15 Reconfigured Stairs Access to Platform
- 16 Vibrant Panel Wall reflecting the Rich Cultural Background of the Local Residents
- 17 Existing SRA Building
- 18 Existing Raised Parking
- 19 Existing Parallel Parking
- 20 Existing Delivery Truck Layover
- 21 Floral Display
- 22 Encourage Raised Planters to Building Edge
- 23 Street Tree in Planting Strip
- 24 Street Tree in Road with Containment Kerb
- 25 Retain Existing Tree

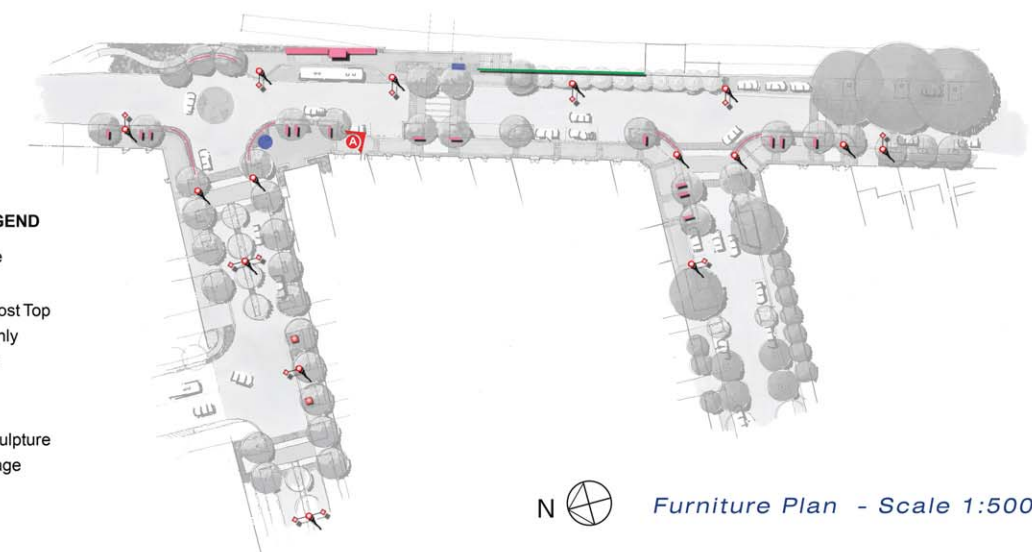
Masterplan - Scale 1:300



Section B-B through Railway Street - Bus Stop

STREET FURNITURE LEGEND

- Street Light - Double
- Street Light - Single
- Pedestrian Light - Post Top
- Post With Banner Only
- Lantern Styled Light
- Public Amenity
- Focal Element
- Water Feature / Sculpture
- Integrated Art/ Signage



Furniture Plan - Scale 1:500

